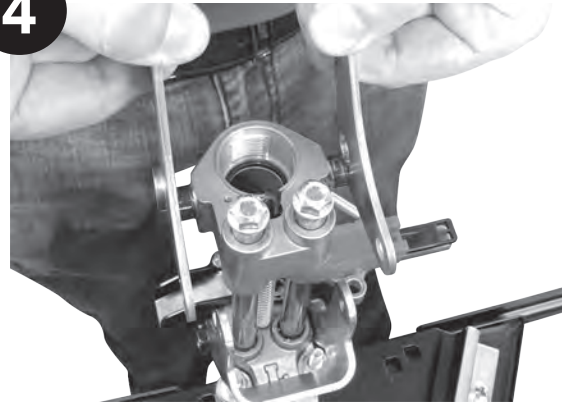


1



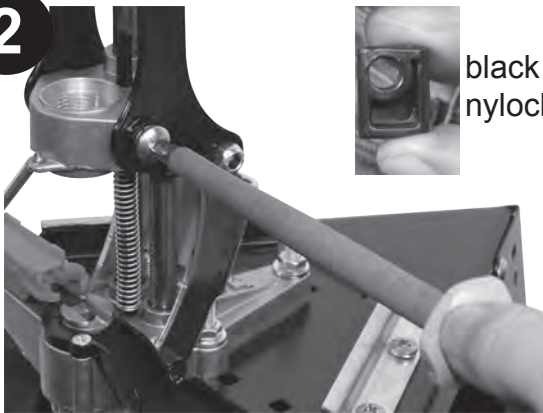
Remove red power grip with a #2 Phillips screwdriver.

4



Remove both PA4315 left and PA4316 right levers.

2

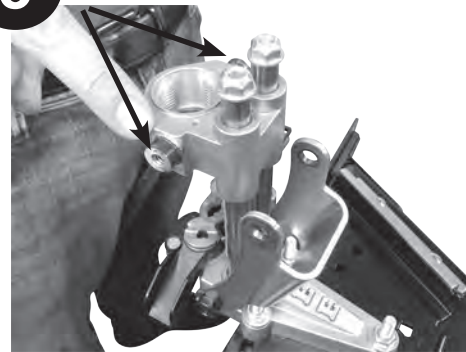


black
nylock

Remove PA4406 Phillips truss head screws on upper casting. The black PA4317 nylocks may fall out when these bolts are removed.

5

Grease



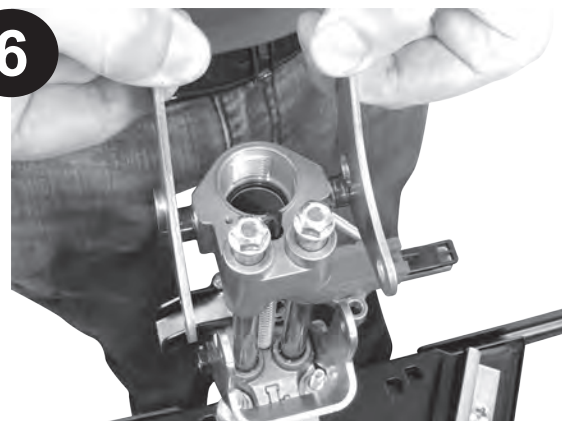
Lubricate handle pivot bosses with grease.

3

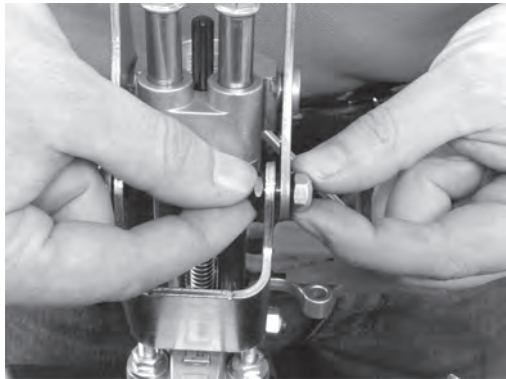
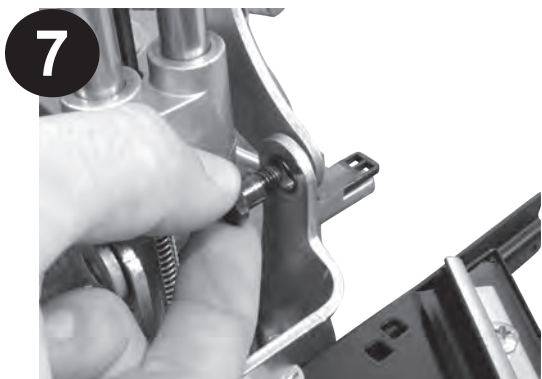


Using two $7/16$ " or 11mm wrenches, loosen and remove PA4330 crown lock nuts and PA1867 shoulder bolts.

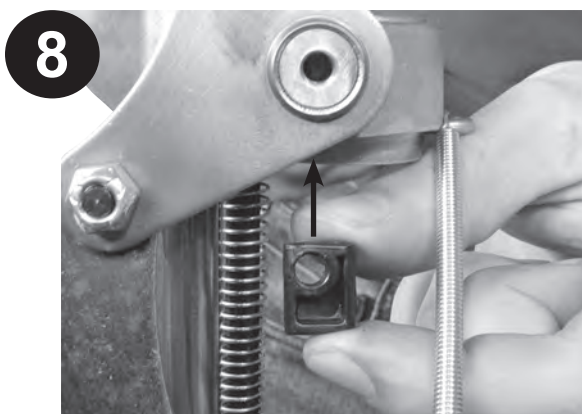
6



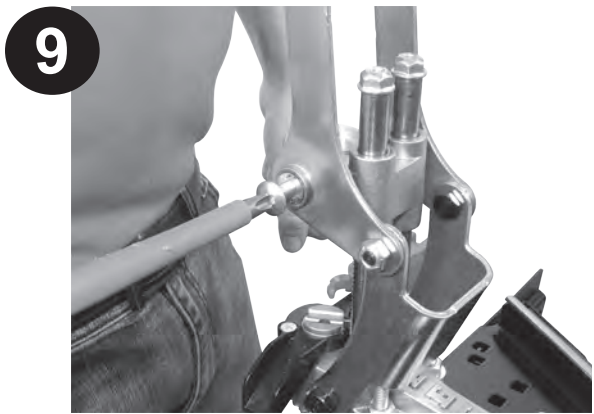
Spread handles and install on upper casting pivot bosses as shown.



Reconnect PA1867 shoulder bolts and tighten PA4330 crown lock nuts. The proper torque is achieved when the nuts are tightened down and the head of the shoulder bolt can freely rotate. If you cannot rotate the head of the shoulder bolts with the open end of the wrench, back off the nuts slightly.



Insert the black PA4317 nylocks into upper tool head.



Re-install PA4406 Phillips truss head screws. Tighten down to shoulder, using a #3 Phillips screw driver.

Enjoy your new roller handle!

APP Accessories



APP Primer Pocket Swage Kit *product 91582*

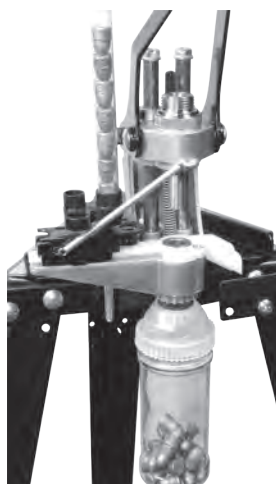
The new swage kit removes military primer pocket crimps as fast as you can operate the lever. Universal shell holder adapter allows you to use your press shell holder or X-PRESS shell holder to swage. Typical cases that you will encounter primer pocket crimps are 45 ACP, 223 (5.56mm), 30-06, 308 (7.62x51), 9mm Luger and special law enforcement 40 S&W.

See complete product instructions shipped with kit.



Breach Lock Ram Prime *product 91612*

Start priming in seconds, nothing to adjust. Includes small and large priming assemblies, no tiny parts to fumble with or lose. Effortless priming in the tightest pockets. Uses any brand press shell holder. Safe with all brands of primers.



APP Bullet Sizing Kit *product 91532*

Allows nose first bullet sizing, change size with an inexpensive punch and die. Nose first bullet sizing is the most accurate, distortion free and because you are pushing on the base of the bullet no special nose punches are required.

Bullets are sized as rapidly as you can operate the press lever. The sized bullets drop into an attached wide mouth container. This is the perfect tool for the now popular powder coated bullets.